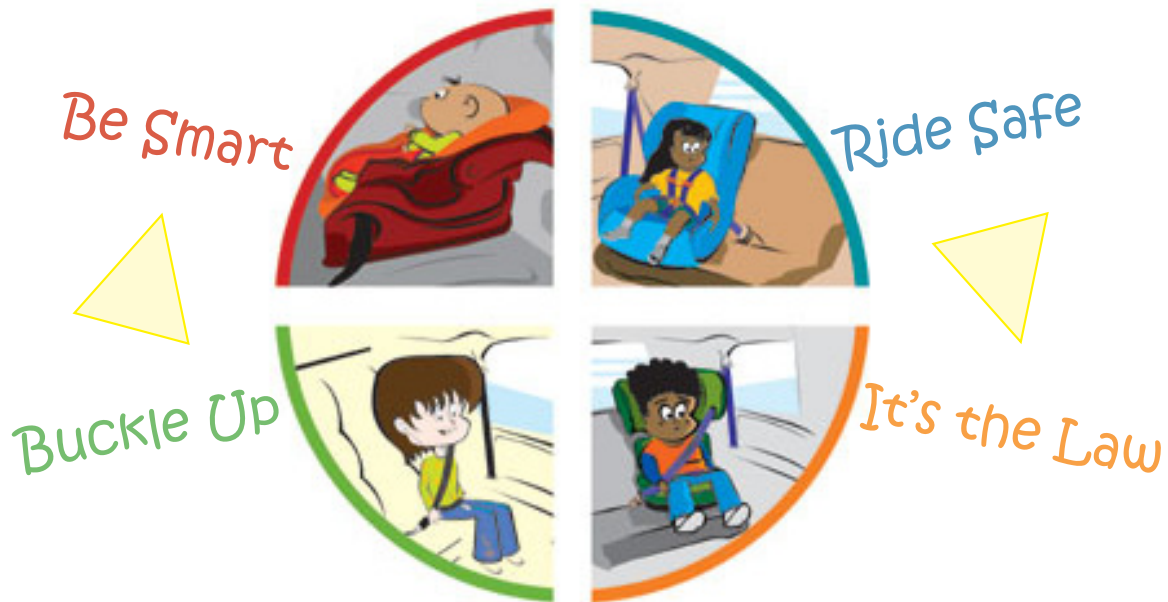


“My child doesn’t need
a booster anymore.”

Think Again



Nationwide “Best Practice” **AND** Oregon Law state:
Children must be secured in a
booster seat until they are 4’9” and the
Adult Safety Belt fits them “properly”.

Proper fit means your child can:

- Sit with their back against the vehicle seat without slouching
- Bend their knees easily over the front edge of the seat with their feet flat on the floor
- Sit with the lap belt positioned low and snug across the hips
- Sit with the shoulder belt positioned across the mid-chest and shoulder
- Stay comfortably seated in this position for the entire ride

11/29/11



Alliance for
Community
Traffic
Safety

For more information visit www.ChildSafetySeat.org
Questions? Call 503-643-5620 or 877-793-2608

